

# BIRT Report Factory

Fact Sheet

## Combining Expertise and Off-site Resources for Cost-Effective BIRT Report Development

The BIRT Report Factory is a pay-as-you-go service for projects newly adopting BIRT (Business Intelligence and Reporting Technology). It is the fastest and most cost-effective manner to develop and deliver a large number of BIRT reports.

The BIRT Report Factory is a shared service that defines and develops reports. The process leverages senior consultants to gather requirements and develop designs and off-site resources to develop the reports productively and cost-effectively. Projects with as few as five reports can benefit from the BIRT Report Factory.

### BIRT Report Factory

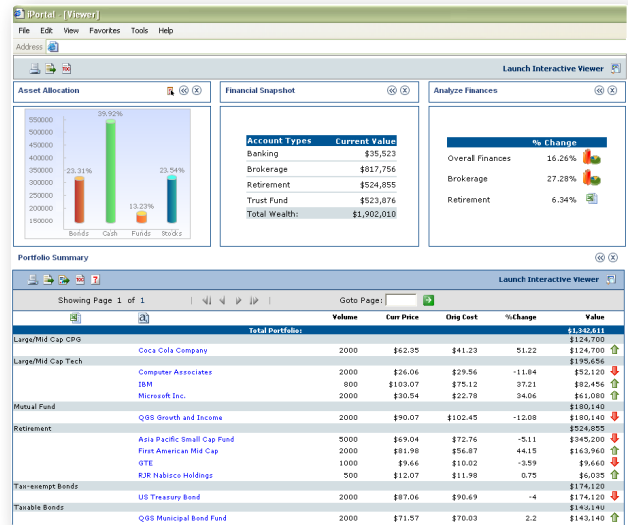
BIRT redefines reporting, from design and development to the final rich, interactive and navigable user experience. Thousands of organizations, software vendors, new development projects and existing applications are moving to BIRT to replace or bypass traditional banded reports with Rich Information BIRT reports.

#### Who Can Benefit

The BIRT Report Factory was conceived and developed to meet the needs of:

- Existing applications with many reports to migrate from older, traditional reporting technologies to BIRT
- Project teams without reporting expertise
- New application development efforts with large numbers of required reports
- Projects with variable reporting needs, such as seasonal or cyclical requirements that do not justify full-time onsite resources throughout the year or the life of the application.

The BIRT Report Factory eliminates the cost of maintaining a dedicated reporting team in addition to the data team. It results in the faster turn-around of reporting requests and the ability to ramp resources up and down as needed.



#### Professional Expertise

Each engagement is led by a senior certified consultant that acts as the Report Conductor. The Report Conductor is the interface to the customer and acts as the conduit between the customer and the off-site developers. The Report Conductor brings a wealth of expertise and knowledge to the tasks of gathering report requirements and developing associated designs. Every Report Conductor follows a standard BIRT Report Factory methodology that ensures effective requirement capture and maximizes report component reuse. The Report Conductor is accountable for the project success and is available to come on-site if needed.

#### Shared Resources

The Report Conductor leads a team of certified report developers at Actuate's BIRT Center of Excellence. These developers then work from the Conductor's designs to develop the final reports, often leveraging a team Report Catalogue to reduce costs and increase productivity.

The shared resource model, assures that BIRT Reports are developed with

- Up-to-date knowledge of the latest BIRT features and capabilities
- Best practices for component reuse
- Best practices for creating "Killer Reports" for different business areas with a highly interactive and rich reporting experience for the end user
- Architectural considerations to ensure integration with other applications and infrastructure.

## How It Works

Few projects have a full specification for all the reporting requirements up front, particularly since many of the interactive, rich content capabilities of BIRT reports are new and few developers have experience assembling reports from reusable reports and report components. To accommodate this reality, the BIRT Report Factory is able to work in an iterative fashion to define requirements.

To start, the Report Conductor will gather whatever a project has that specifies basic report layout and data provisioning, if it has it, in whatever format. From there, the expertise of the Report Conductor kicks in to fill-in any specification gaps and to refine and detail the requirements.

### Guidance Estimate Phase

- Report Conductor interacts with the customer to gather required information and act as a single point of contact.
- Customer project team provides any layout and other report specification information for a set of reports.
- Report Conductor provides a guidance estimate for report development using the BIRT Report Factory.
- Customer project team confirms guidance estimate is in line with budgets and value requirements.

### Project Plan Creation

- Report specifications are passed to the off-site report development team and a more detailed Project Plan or "Statement of Work" is created.
- Customer project team reviews the Statement of Work and approves the development work.
- At this point, a purchase order is required against which work completed can be invoiced.

### Development

- Required reports are developed and delivered to the customer with guidance on deployment.
- Iterative requirements specification continues as the project team learns more about their reporting requirements, works with the Report Conductor, and experiences more of the capabilities of BIRT reports.
- Requirements continue to be refined and detailed.
- Reports continue to be developed and refined.

### Deployment and Acceptance Testing

- Customer project team deploys and conducts acceptance testing in communication with the Report Conductor.
- Required fixes are documented, communicated and completed.
- Final reports are delivered.



## BIRT Exchange and Actuate

All services and training offered on BIRT Exchange are provided by Actuate Corporation, the sponsor for BIRT Exchange, and the BIRT Exchange team.

Actuate initiated and co-leads Eclipse BIRT (Business Intelligence and Reporting Tools), an Eclipse Foundation open source project. Actuate delivers value-add products, services, support, and training for BIRT.

### About Actuate Corporation

Actuate Corporation is dedicated to increasing the richness, interactivity and effectiveness of enterprise data, for everyone, everywhere. The company has over 4,200 customers globally in a diverse range of business areas including financial services and the public sector, many of which have a long history of deploying Actuate-based solutions for dozens, or even hundreds of their mission-critical applications. Founded in 1993, Actuate has headquarters in San Mateo, California, with offices worldwide. For more information on Actuate, visit the company's web site at [www.actuate.com](http://www.actuate.com).

### BIRT Exchange Community Site

Visit [www.birt-exchange.com](http://www.birt-exchange.com) for free trial software, forums, documentation and other resources.

### About Actuate Corporation

Actuate initiated and co-leads Eclipse BIRT (Business Intelligence and Reporting Tools), an Eclipse Foundation open source project. Actuate delivers support and training for BIRT, a product line that builds on BIRT, and products that support spreadsheets in Java.