

# Best Practice BIRT Report Design Package

Fact Sheet

## Training plus Mentoring to Take Full Advantage of BIRT Innovations

The Best Practice BIRT Report Design Package is a combination of two days of classroom training and three days of hands-on expert guidance with the goal of creating a project-specific reusable reporting framework. Under the guidance of a certified BIRT consultant, your project team will learn and apply best practices for designing libraries of reusable report components, creating report templates and developing reports to meet project requirements.

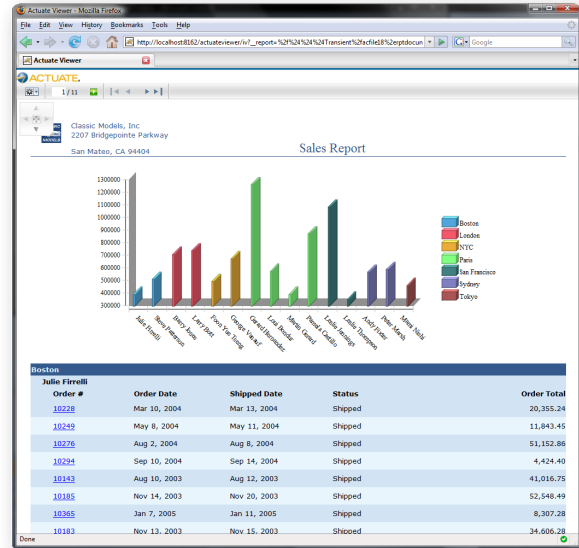
### Getting the Most from BIRT

BIRT (Business Intelligence and Reporting Technology) redefines reporting, from design and development to the final user experience. As a project moves from traditional banded reports to highly interactive, rich content, and navigable reports, it is important to understand the best design and development approaches to assure reuse, developer productivity and that the reports provide the most compelling user experience.

#### Component Reuse Model

A key contributor to the power of BIRT is that the BIRT Report Designers support component and design template reuse. Changes made to components can be automatically propagated to report designs that use them. This isolates complexity so that roles and responsibilities can be distributed based on skill level for efficient development and maintenance, while maintaining design consistency.

BIRT Report Designers also separate presentation, business logic, and data access so that one can be changed without affecting the others to make the reports easier to enhance and maintain. To fully leverage BIRT, it is important to understand these concepts and know how to properly design and develop the reuse libraries to best support each project.



#### Rich Information Report Designs

Each BIRT report is made up of a series of components which can be highly graphical and interactive and whose behavior changes based on content. These reports are navigable from page to page and report to report. To give users the full BIRT report experience, it is important to understand how best to design reports and compound reports; how to integrate their images, graphics, and charts; and how to influence report behavior and display with parameters, conditional formatting, and formulas.

#### Integration

The BIRT reporting technology was designed to live in a world of other systems; it is extensible, programmable and integrates well into existing applications and infrastructures. It can be implemented as a stand-alone service, embedded in web applications, or deployed as an end-user reporting portal. It can leverage existing security systems, web servers, data sources and other infrastructure. Applying these strengths appropriately to each project is to take full advantage of BIRT.

## Two-Day Classroom Training

The Best Practice BIRT Report Design Package starts with a tailored “Working with BIRT Designer” training course. This classroom training develops the skills needed to build reports using the BIRT Report Designer. The course provides a comprehensive overview of the powerful BIRT technology features. By the end of this two-day training, students will have mastered the skills to create a wide variety of reports, simple and sophisticated, using the graphical tools within the BIRT Report Designer.

### Format

Through presentations, demonstrations, and exercises, students are introduced to the design tools and basic reporting concepts, and then progressively explore more advanced features. Students create reports that range from simple listing reports to complex reports using grouping, report parameters, multiple master pages, hyperlinks, and data from a variety of data source types.

This is a highly interactive, instructor-led class providing many opportunities for students to ask questions, explore new areas, and receive help from the instructor as they work through the exercises.

### Rich Information Report Design Topics

- Orientation and creating first report
- Formatting a report
- Sorting, grouping, and aggregating data
- Creating reports that use parameters
- Writing expressions
- Building a report that contains sub-reports
- Designing a multiple-page report
- Designing master pages
- Creating hyperlinks
- Creating charts
- Adding interactive features to a chart

### Integration Topics

- Connecting to JDBC, text, and XML data sources
- Joining data sets

### Component Reuse Model Topics

- Creating and using libraries
- Creating and using templates

### Additional Resources

Each student receives a workbook, which contains all the exercises students will complete in class. Students also receive “BIRT: A Field Guide to Reporting”, the book published by Addison-Wesley.

## Three Days of Mentoring

After the two-day course a consultant will stay on-site for three days and work hands-on with the project team to apply the newly-learned best practices to their project.

### The Result: The Foundation for a Reusable Reporting Framework

The consultant will work with the project team to create a reusable reporting framework to reduce development effort and meet the reporting requirements of the project.

### The Process

- Consultant will review overall reporting needs and requirements.
- Consultant will guide the design of a library of reusable report components.
- Consultant will help define a set of report templates each of which meets the needs of multiple reports.

## BIRT Exchange and Actuate

All services and training offered on BIRT Exchange are provided by Actuate Corporation, the sponsor for BIRT Exchange and the BIRT Exchange team.

Actuate initiated and co-leads Eclipse BIRT (Business Intelligence and Reporting Tools), an Eclipse Foundation open source project. Actuate delivers value-add products, services support, and training for BIRT.

### About Actuate Corporation

Actuate Corporation is dedicated to increasing the richness, interactivity and effectiveness of enterprise data, for everyone, everywhere. The company has over 4,200 customers globally in a diverse range of business areas including financial services and the public sector, many of which have a long history of deploying Actuate-based solutions for dozens, or even hundreds of their mission-critical applications. Founded in 1993, Actuate has headquarters in San Mateo, California, with offices worldwide. For more information on Actuate, visit the company's web site at [www.actuate.com](http://www.actuate.com).

### BIRT Exchange Community Site

Visit [www.birt-exchange.com](http://www.birt-exchange.com) for free trial software, forums, documentation and other resources.

### About Actuate Corporation

Actuate initiated and co-leads Eclipse BIRT (Business Intelligence and Reporting Tools), an Eclipse Foundation open source project. Actuate delivers support and training for BIRT, a product line that builds on BIRT, and products that support spreadsheets in Java.