

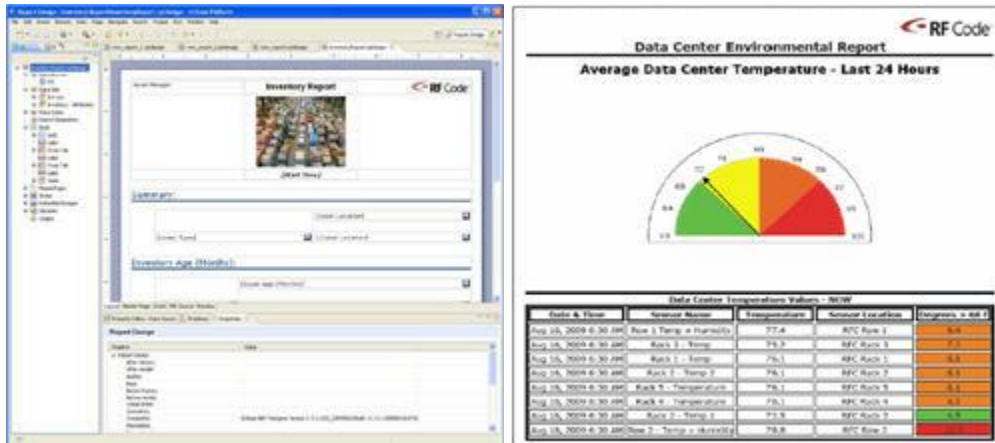
RF Code

www.rfcode.com

RF Code combines deep roots in wireless (active RFID) with extensive experience in asset and environmental monitoring, to produce Adaptive Asset Awareness solutions that are adaptable, real time, efficient, ROI-focused, wire-free and open.

The RF Code Asset Manager and Sensor Manager applications have the BIRT Engine integrated into their reporting capabilities. Customers can utilize the BIRT Report Designer to create report designs, then upload those designs to either Asset Manager or Sensor Manager. At this point the reports can be run on demand or on a scheduled basis using the BIRT Engine. Since Asset Manager is all about tracking physical assets, BIRT reports that are run against the Asset Manager database can show critical information such as asset status and location, as well as asset age, warranty status, owner, etc. RF Code's Sensor Manager is about monitoring environmental conditions in a data center, therefore the reports created by BIRT show charts depicting average, maximum and minimum temperatures and humidity; historical temperature and humidity line graphs showing trends are also utilized.

What the developers of RF Code like most about BIRT is the fact that they can incorporate the core BIRT Engine into their product, allowing their customers to create highly customized and professional-looking reports. This allows RF Code to focus its efforts on other feature functions without needing to recreate complicated reporting applications. The BIRT Designer also enables RF Code customers to become self-sufficient in better utilizing the data produced by their Asset Manager and Sensor Manager systems.



Copyright © 2010 Actuate Corporation. All rights reserved. Actuate and the Actuate logo are registered trademarks of Actuate Corporation and/or its affiliates in the U.S. and certain other countries. All other brands, names or trademarks mentioned may be trademarks of their respective owners.

Information source from RF Code (<http://www.rfcode.com/About/About-RF-Code/About-RF-Code.html>) on 10/21/2010.